



DTS Europe installed a set of two Yamaha DME64N Digital Mixing Engines in the new preview theatre at their European headquarters in Twyford, UK. Connected by CobraNet, the DME64N is used for routing and applying equalization, crossover and delays to the 7.1 outputs from DTS decoders. Yamaha XP5000 power amps are used to drive a set of Procella 8 mid/high and Procella 15 bass units and LFE subs. The use of the DME64 allows DTS to run the theatre in full 96kHz mode, a first for cinema worldwide. The ability to store and recall several 'scenes' in the DME64 gives the users the capability to switch from 35mm film projection to D-cinema applications or home theatre such as DVD, HD-DVD or Bluray Disc at the push of a button.

More info on [www.dts.com](http://www.dts.com).



Yamaha's Tn series touring amplifier has been introduced to the professional audio market at the September PLASA show in London. Offering up to 2\*2500W power handling the Tn series can drive loads down to 2 ohm, making it the perfect amp for line array and subwoofer rigs. Two ohms is not just a number on a specification sheet; the T3n, T4n and T5n performance is certified by the Underwriters Laboratories Inc®. In addition to the power handling the Tn series offer a low weight using EEEngine technology, a touring grade mechanical construction and network control and monitoring capabilities facilitating extensive system management using Yamaha AmpManager software. But most of all the Tn series is the best sounding touring class amplifier we've ever made.



New AMX Duet Modules for Yamaha's DME Digital Mixing Engine product series are now available! DME Version 2 brought easier remote control protocol. The next step was greater integration with market leading control systems.

The new Duet modules enable system integrators to incorporate highly configurable, scalable DME based audio systems into their customers' AMX NetLinx™ control systems with greater ease. AMX's acclaimed Duet Partner technology supports two-way communication between the DME's RS-232C interface and the AMX NetLinx controller that manages the touch panels using Yamaha protocols.

AMX's Duet technology includes Dynamic Device Discovery Technology. DDDT might best be described as the Godzilla of device integration. Like torn down power lines and squashed subway cars, DDDT demolishes the language barriers between system controllers and the devices they control. Using Java to dynamically communicate with DME, rather than "programming in concrete", the embedded Device Discovery Protocol (DDDP), allows Duet to recognize the device and load the appropriate Duet module for DME, which automatically installs the new device. AMX's NetLinx Master can then find and install the DME Duet device module either from a library on the master from AMX's website.

More info on [www.amx.com](http://www.amx.com)



	DME8i-C	DME8o-C	DME4io-C	DME8i-ES	DME8o-ES	DME4io-ES	DME24N
Functionality	Mixing Engine	Mixing Engine	Mixing Engine	Mixing Engine	Mixing Engine	Mixing Engine	Mixing Engine
Inputs	8 analogue 16 CobraNet	16 CobraNet	4 analogue 16 CobraNet	8 analogue 16 Ethersound	16 Ethersound	4 analogue 16 Ethersound	8 analogue 16 YGDAI
Outputs	16 CobraNet	8 analogue 16 CobraNet	4 analogue 16 CobraNet	16 Ethersound	8 analogue 16 Ethersound	4 analogue 16 Ethersound	8 analogue 16 YGDAI
Audio network protocol	CobraNet	CobraNet	CobraNet	Ethersound	Ethersound	Ethersound	



DME64N	ICP1	CP	NHB32C	ACU16C	NAI48-ES	MY16C-II	AVY16-ES
Mixing Engine	Intelligent controlpanel	GPI control panels	CobraNet to AES/EBU convertor	CobraNet to analogue convertor	Ethersound to AES/EBU convertor	YGDAI CobraNet interface	YGDAI Ethersound interface
64 YGDAI			32 AES/EBU 32 CobraNet	32 CobraNet	48 AES/EBU 48 Ethersound	16 CobraNet	16 Ethersound
64 YGDAI			32 AES/EBU 32 CobraNet	16 analogue	48 AES/EBU 48 Ethersound	16 CobraNet	16 Ethersound
			CobraNet	CobraNet	Ethersound	CobraNet	Ethersound



Engineer:  
Karsten Steil

Project:  
Yamaha



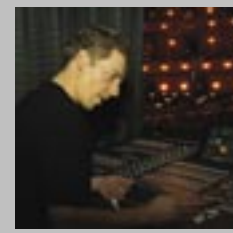
Engineer:  
Akira Shimura

Project:  
Ryuichi Sakamoto



Engineer:  
Joerg Landstorfer

Project:  
Kölnball FOH



Engineer:  
Reiner Kremer

Project:  
Kölnball Mon



Engineers:  
John Godenzi  
Aaron Gordon

Project:  
Manilow Music and Passion

One of the things you need to do in order to make a digital mixing console is to program a handfull of DSP chips. With extremely powerfull DSP chips available in today's mature DSP market it seems easy enough.... not. There are many tricky design challenges involved that are far more difficult to achieve than they first appear. For example, the need to design reliable and stable connectivity to popular digital formats such as AES/EBU, Adat and CobraNet that are so often requested by users. Another being to provide a sensible user interface to control the huge quantity of parameters in a digital console.

As far back as 1987, Yamaha took on these challenges starting with the DMP7, launched in a time when digital recording consoles were priced in the '6 digit range'. In 1995, the O2R set the new standard in price, audio quality and feature set of digital mixing consoles. Many of the DMP7's and O2R's innovations are still included in the present series of digital PM consoles, such as motorised faders, 'sends on faders', the selected channel, and the luxury of having gates and compressors on all channels. The digital connectivity has been perfected by the Mini YGDAI system, connecting to any digital source in a true plug and play fashion. These design concepts can not be bought on a market, they require say 20 years of experience in mass-manufacturing digital mixing consoles.