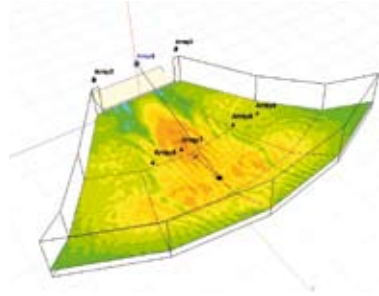




As great and as complete as an owners manual can be, sometimes the only thing you need to have is a quick answer to questions like "Does the LS9 have a wordclock output?" or "How many slots does a DME64N have?"

From now on surfing to www.yamahaproaudio.com and clicking on "rear panel gallery" in the support tab will bring you just that; a quick link to the back-panels of Yamaha Commercial Audio gear.



With the I-Series loudspeakers, Yamaha completes its Commercial Installed Sound product lineup. This makes it possible to deliver the system package from one manufacturer, which of course brings a lot of advantages for the consultants and installers. All information and technical support can be acquired from one contact.

In case of Engineered Installed Sound experience and a solid knowledge of (electro)acoustics are required. With the use of acoustical simulation tools a higher accuracy can be guaranteed.

Yamaha Commercial Audio delivers a number of great tools for the I-series speakers. With the availability of EASE® and Ulysses data, these two popular simulation programs are supported. With the CLF viewer it is possible to check the speakers parameters and measurements. Apart from that Yamaha provides a simple and efficient tool called YS3 to generate a simulation of the direct sound level.



Having performed over 150 Yamaha Commercial Audio Training Seminars in the past 2 years, a challenging new schedule has been planned by YAMAHA for the year 2007/2008. Utilising the positive feedback of the many attendants of the past series, the YCATS curriculum for this year has been expanded with some trainings. The new series of over 40 seminars have been planned in Germany, Austria, Switzerland and the Benelux, as well as in Poland, and the Baltic States.

Check the topics and schedule on: www.yamahacommercialaudio.com.



AMX Duet Modules for Yamaha's DME Digital Mixing Engine product series are available! DME Version 2 already brought easier remote control protocol. The next step was greater integration with market leading control systems.

The new Duet modules enable system integrators to incorporate highly configurable, scalable DME based audio systems into their customers' AMX NetLinx™ control systems with greater ease. AMX's acclaimed Duet Partner technology supports two-way communication between the DME's RS-232C interface and the AMX NetLinx™ controller that manages the touch panels using Yamaha protocols

The PM5D is a great live sound console, its quality and reliability has made it the world's first choice of large digital mixer. Despite its maturity and popularity, the large user base of discerning professional engineers always wanted to add more features to suit their many different applications. The PM5D V2 is the result; it's loaded with new features grounded in actual day-to-day experience ranging from subtle refinements to seriously notable innovations. And owners of the original PM5D aren't excluded from the good news: a free firmware update, downloadable from Yamaha's Pro Audio website, will bring any existing PM5D up to the PM5D V2 specification.



DSP5D compatibility

From Version2 on one or two DSP5D's can be cascaded to a PM5D(RH) to double or even triple the amount of input channels and processing. Not only the processing for the inputs and outputs, but also the amount of GEQ's and multieffects are doubled or tripled. Also new in Version2 are the incomparable VCM effects. Rev-X, Comp266, Comp276, EQ601 from the channels strip package as well as the great Opencodeck package are added to the library!



Virtual Soundcheck

With a multi-track recording system like Steinberg's Nuendo, the PM5D V2 can not only be a part of a high quality recording setup, but a recording made during the rehearsal of the performance can be temporarily patched to the inputs to use as source for a soundcheck when the musicians are not available. All setting can be directly saved without the need to re-patch or reboot afterwards.



Extra EQ

The PM5D's eight SPX2000-class internal effect processors offer a vast amount of DSP power. But since not every application requires full use of eight powerful effect processors, some of that power may be diverted. In version 2 that potential can be used to provide additional graphic and parametric EQ units. The PM5D V2 offers a plentiful supply of independent equalizers with new narrower Q settings for input and output processing, but every engineer runs up against situations in which no amount of EQ seems to be enough.



Channel move

This seemingly simple function can be a huge advantage when revising a channel layout plan. Mono and stereo input channel setups can be "moved" to any other channel in one simple operation so you don't have to spend time re-entering all of the related channel settings, including patch and HA settings.



Output isolation

In a festival situation you, as console babysitter, want to be sure that all engineers can load their own setting without having the possibility to accidentally overwrite the system's output parameters with their files. With the click of one function all output parameters such as patching, output processing, matrix structure can be isolated.



Monitor/cue level on fader

Also this much heard wish has been included into the Version firmware for PM5D. The monitor guys will now be able to use the Stereo faders or one of the DCA faders as level controller for the monitor and/or cue level bus.

These were only 6 of the new features. Please check the details on the web to learn about the other 50 features like: added direct out points, output phase reverse, omni outputs, load lock from card, top panel control improvements, mix send overview, DCA fader mute button, de-esser as effect library entry, automatic GEQ dis-patch, many new user defined functions, many new more functions in the Studio Manager Editor for PM5DV2, and much much more.....

The ongoing implementation of networked audio systems in the professional live market is increasing efficiency, quality and flexibility of live mixing. Replacing heavy bulky analogue cabling, networked systems use flexible, light weight CAT5E or fibre cables, connecting hundreds of audio channels with a single connector, keeping audio quality in the digital domain over up to kilometers of cabling. For touring, the simple cabling and flexibility allows for significant logistic and labour savings to be achieved, with the system's channel count no longer being limited by cabling constraints. At Yamaha, with it's long history in manufacturing live mixers, distribution and amplifiers for the touring market, we are one step ahead, offering connectivity for all of our digital mixing consoles to any networked audio format on the market such as CobraNet™, EtherSound™, OptoCore™, Aviom™, LightViper™, MADI. What's more, we offer true integrated solutions in plug and play packages based on the open EtherNet audio protocols CobraNet™ and EtherSound™. These solutions carry both audio and control data integrated in one cabling system to support EtherNet IP functionality such as StudioManager, DME designer, QSControl.net, HiQnet™, DMX, video etc. All touring solutions packages are very easy to set up, with 100 meters FOH redundant fibre cabling and stage CAT5E cabling as a standard. Touring solutions stageracks will work with any Yamaha mixer. FOH, Monitor or both. With direct links to Yamaha and other manufacturers amp racks. Yamaha touring solutions. Plug and play.



	M7CL32 Rack Touring Solution	M7CL48 Rack Touring Solution	PM5D Rack Touring Solution	Mon kit Touring Solution	Amp Rack Touring Solution
Rack Size	12U	20U	20U	Dog House	12U
Inputs	32 RH quality	48 RH quality	48 RH quality	-	-
Outputs	8 with DSP	16 with DSP	16 with DSP	-	8 with DSP
Protocol	CobraNet™ or ES100	CobraNet™ or ES100	CobraNet™ or ES100	CobraNet™ or ES100	CobraNet™ or ES100
Supplied cable	2 x 100m fibre	2 x 100m fibre	2 x 100m fibre	2 x 25m CAT5	2 x 25m CAT5
SRP	ask for a quote	ask for a quote	ask for a quote	ask for a quote	ask for a quote



Engineer:
Ben Booker

Project:
The Coral



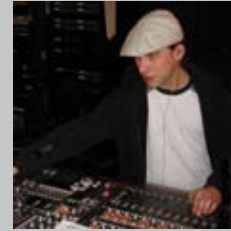
Engineer:
Bill Birkes

Project:
BBC Children in need



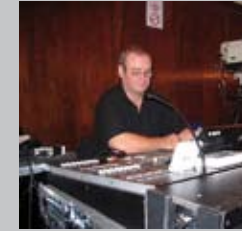
Engineer:
Eddie Mulrahey

Project:
The Beautiful South



Engineer:
Christian Hoff

Project:
Blue Man Group Oberhausen



Engineer:
Ian Wheaton

Project:
Little Britain



To join the Yamaha Digital Live Mixing engineers reference list, email your picture to proaudio@yamaha.nl